

THE GARCIA



EXTERIOR FEATURES

Roof Material: 25 year dimensional shingles

Windows: Vinyl, insulated Low E single hung tilt, grills & screens

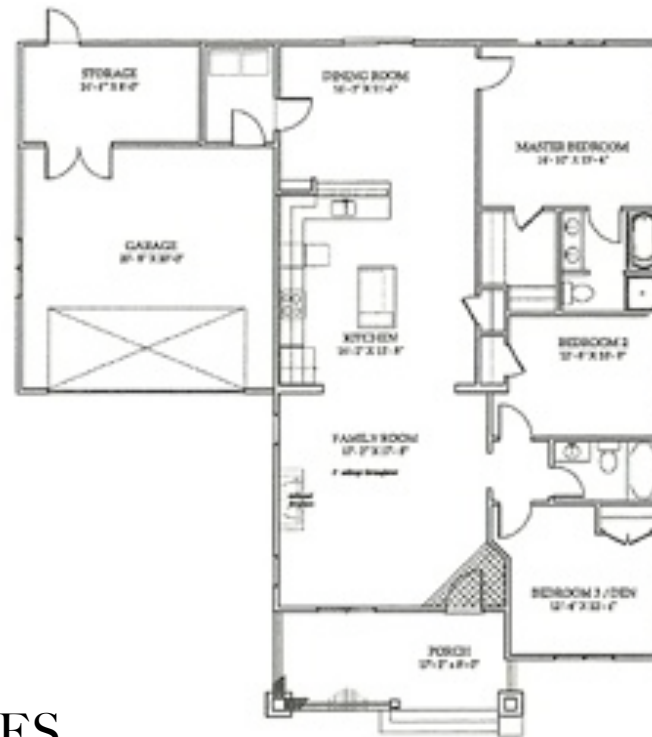
Garage Door: Carriage style with garage door opener

Drive: Concrete driveways and walkways

Entry Door: Insulated fiberglass front doors with glass

Foundation: 3 piece raised slab

THE GARCIA



INTERIOR FEATURES

- 9' Ceilings
- Crown molding on ceiling and cabinets
- 5 1/4" Base board
- 3 1/4" Trim-on doors & windows
- Brushed nickel hardware on cabinets, doors, light fixtures & faucets by Delta
- 55 Appliances
- Arch Top interior doors
- Bonded Builder 10 year structural warranty

1,384 Sq. Feet
(May Vary)

DETAILS

- 3 Bedrooms
- 2 Baths
- Family Room
- Kitchen with island & breakfast bar
- Dining Room
- Storage
- Walk-In Closet
- 2 Car Garage
- Front Porch